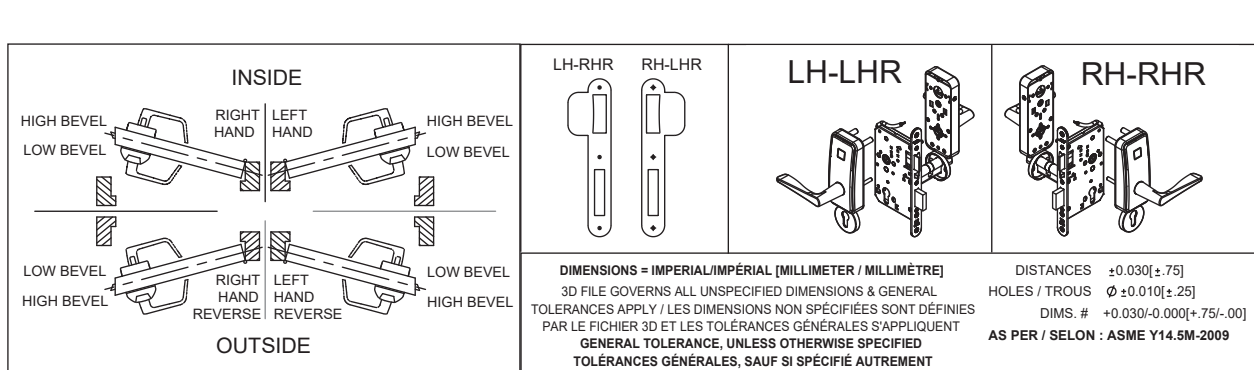
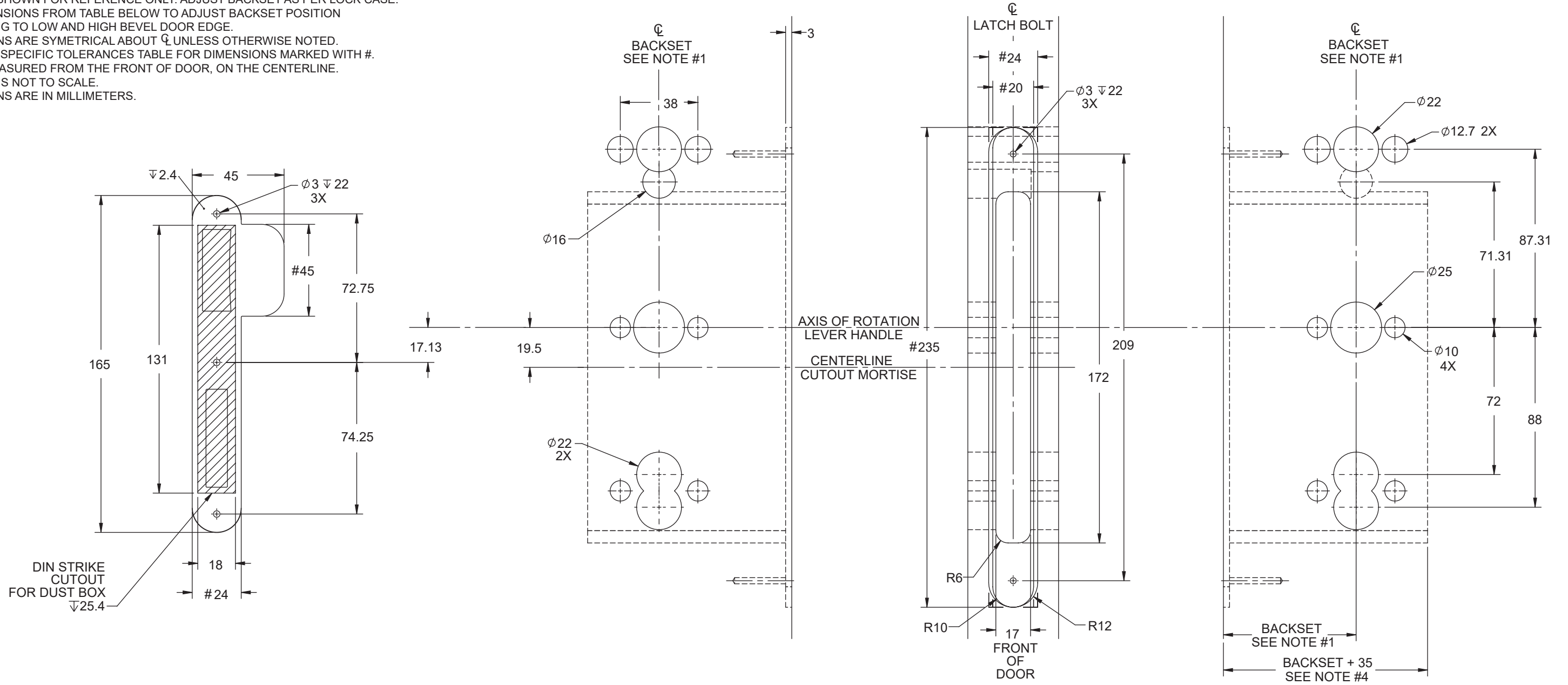


# Saffire LX-M & Saffire EVO LZ-M

## Euro mortise lock case 395 Euro profile cylinder door preparation

**NOTES:**

- BACKSET SHOWN FOR REFERENCE ONLY. ADJUST BACKSET AS PER LOCK CASE. USE DIMENSIONS FROM TABLE BELOW TO ADJUST BACKSET POSITION ACCORDING TO LOW AND HIGH BEVEL DOOR EDGE.
- DIMENSIONS ARE SYMMETRICAL ABOUT  $\varnothing$  UNLESS OTHERWISE NOTED.
- REFER TO SPECIFIC TOLERANCES TABLE FOR DIMENSIONS MARKED WITH #.
- DEPTH MEASURED FROM THE FRONT OF DOOR, ON THE CENTERLINE.
- DRAWING IS NOT TO SCALE.
- DIMENSIONS ARE IN MILLIMETERS.



| BACKSET ADJUSTMENT FOR 3° BEVEL DOOR |                                |  |
|--------------------------------------|--------------------------------|--|
| DOOR THICKNESS DIMENSION X           | BACKSET ADJUSTMENT DIMENSION Y |  |
| 1.25" [31.8mm]                       | .032" [0.81mm]                 |  |
| 1.50" [38.1mm]                       | .039" [1.00mm]                 |  |
| 1.75" [44.5mm]                       | .046" [1.17mm]                 |  |
| 2.00" [50.8mm]                       | .052" [1.32mm]                 |  |
| 2.25" [57.2mm]                       | .059" [1.50mm]                 |  |
| 2.50" [63.5mm]                       | .065" [1.65mm]                 |  |
| 2.75" [69.9mm]                       | .072" [1.83mm]                 |  |

**WARNING**

- To verify lock coverage and door operation meets expectations, dormakaba strongly recommends completing a full door mockup. This will ensure that all necessary products and parts for a successful installation are included.
- Always validate that you have selected the correct template for specific lock model being installed. The same lock model can be offered with different locking device options.
- Drawing is not to scale. Measurements are for reference only. Not a drilling template.
- If you have any questions, please contact your local sales representative or authorized reseller.